

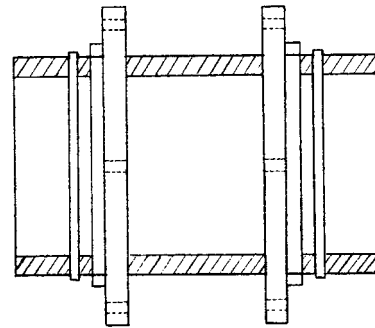


# Swivel Anchor Pipe & Couplings

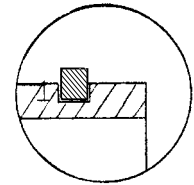


MANUFACTURER'S STANDARD

Swivel Anchor Pipe and Couplings provide a positive, low cost method of restraining valves and hydrants without rodding or blocking. They are fabricated of 100% ductile iron components. No steel, welds or other dissimilar materials in the ground to corrode or distort. A groove is machined into the ductile iron pipe barrel, into which a ductile iron retaining ring is installed. The raised surface of the ring provides a bearing surface against which the inverse machined surface of the rotatable ductile iron follower is restrained. The "one-piece" swivel design offers the optimum in versatility with the absolute minimum inventory.



Swivel x Swivel



Ring Detail

## STANDARDS

Restrained joints are not addressed by ANSI/AWWA standards. All are "manufacturer's standard". Producers, however, may reference the appropriate provisions of ANSI/AWWA standards which apply to their respective restrained joint concept. The standard provisions to which our design conform are:

- DI Pipe Barrel: ANSI/AWWA C151/A21.51 Class 53
- Groove Depth: AWWA C606 Table 1
- DI Retaining Ring: ANSI/AWWA C151/A21.51.
- DI Swivel Follower: ANSI/AWWA C110/A21.10 Compatible

Detailed dimension drawings and independent laboratory test data are also available upon request.

## WORKING PRESSURE

Class 53 pipe barrel is rated at 350 psi prior to fabrication and assembly. Wall thickness beneath the groove exceeds the minimum referenced in ANSI/AWWA C150/A21.50 Table 50.13 "Thickness for Internal Pressure", for 350 psi rating plus a surge allowance of 100 psi. For unusual conditions, pipe classes up to Class 56 may be specified at higher cost.

## SIZES & LENGTH

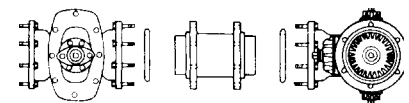
Anchor Pipe and Couplings are available in diameters 4" thru 12" and lengths from 1'0" to 18'0" or more; depending on size.

## COATINGS & LININGS

Anchor pipe is furnished with a bituminous exterior coating per ANSI/AWWA C151/A21.51 and cement mortar lined and seal coated per ANSI/AWWA C104/A21.4.

## ORDERING NOTE:

Anchor pipe is ordered as is fabricated pipe (i.e., 1-06" SWV x SWV 04'00"). Other fabricated pipe ends may be ordered in conjunction with SWV ends (i.e., 1-06" MJB x SWV 04'00"). Prices may be calculated from the Fabricated DI Pipe Price List.



Form No. FP0115

Note: Design subject to change without notice.

# Fab pipe inc.



21425 147th Ave. N., Rogers, MN 55374  
Tel: (763) 428-2259 • Fax: (763) 428-4978

