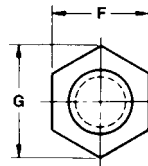
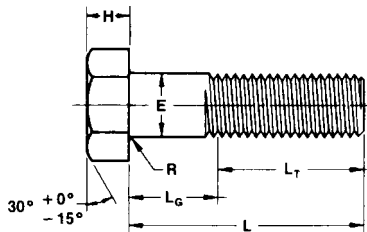




Heavy Hex Bolts and Nuts Model FBZ - Zinc Plated

UNITED BRAND

ANSI B16.1 Class 125
ANSI B16.5 Class 150

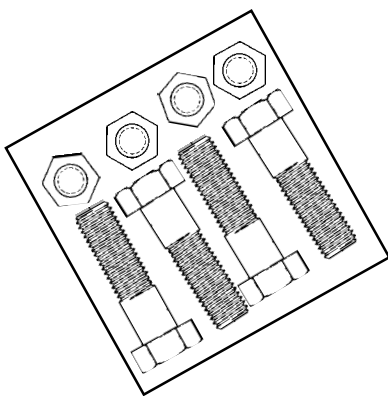


| Nominal Size | E | F | G | H | R | L _T | L |
|---------------|---------------|--------------------|----------------------|--------|------------------|----------------|--------------|
| | Body Diameter | Width Across Flats | Width Across Corners | Height | Radius of Fillet | Thread Length | Shaft Length |
| 5/8 x 2 1/2 | 0.642 | 1 1/16 | 1.227 | 27/64 | 0.02~0.06 | 1.50 | 2.50 |
| 5/8 x 3 | 0.642 | 1 1/16 | 1.227 | 27/64 | 0.02~0.06 | 1.50 | 3.00 |
| 3/4 x 3 1/2 | 0.768 | 1 1/4 | 1.443 | 1/2 | 0.02~0.06 | 1.75 | 3.50 |
| 7/8 x 4 | 0.895 | 1 7/16 | 1.659 | 37/64 | 0.02~0.06 | 2.00 | 4.00 |
| 1 x 4 1/2 | 1.022 | 1 5/8 | 1.876 | 43/64 | 0.03~0.09 | 2.25 | 4.50 |
| 1 1/8 x 5 | 1.149 | 1 13/16 | 2.093 | 3/4 | 0.03~0.09 | 2.50 | 5.00 |
| 1 1/4 x 5 1/2 | 1.277 | 2 | 2.309 | 27/32 | 0.03~0.09 | 2.75 | 5.50 |
| 1 1/4 x 6 1/2 | 1.277 | 2 | 2.309 | 27/32 | 0.03~0.09 | 2.75 | 6.50 |
| 1 1/2 x 7 | 1.531 | 2 3/8 | 2.742 | 1 | 0.03~0.09 | 3.25 | 7.00 |
| 1 1/2 x 7 1/2 | 1.531 | 2 3/8 | 2.742 | 1 | 0.03~0.09 | 3.50 | 7.50 |
| 1 1/2 x 8 | 1.531 | 2 3/8 | 2.742 | 1 | 0.03~0.09 | 3.50 | 8.00 |

1. Heavy hex head steel bolts to ANSI B18.2.1 with heavy hex steel nuts to ANSI B18.2.2. Bolts threaded to ANSI B1.1 unified inch screw threads, Class 2A external & Class 2B internal. The steel material conforms to ASTM A307 specification for carbon steel externally threaded standard fasteners, Grade B.
2. Zinc Plated per ASTM B633
3. Individual water resistant packages.

Bolt & Nut Packs

| Part No. | Class 125/150 Flange Size | Bolt Diameter and Length | No. of Bolts per Poly Bag | Master Box (Qty. of Sets) | Master Box Weight (Lbs.) |
|----------|---------------------------|--------------------------|---------------------------|---------------------------|--------------------------|
| FBZ03 | 2 | 5/8 x 2 1/2 | 4 | 20 | 34 |
| FBZ03 | 2 1/2 | 5/8 x 2 1/2 | 4 | 20 | 34 |
| FBZ03 | 3 | 5/8 x 2 1/2 | 4 | 20 | 34 |
| FBZ04 | 4 | 5/8 x 3 | 8 | 16 | 55 |
| FBZ08 | 5 | 3/4 x 3 1/2 | 8 | 10 | 60 |
| FBZ08 | 6 | 3/4 x 3 1/2 | 8 | 10 | 60 |
| FBZ08 | 8 | 3/4 x 3 1/2 | 8 | 10 | 60 |
| FBZ12 | 10 | 7/8 x 4 | 12 | 4 | 56 |
| FBZ12 | 12 | 7/8 x 4 | 12 | 4 | 56 |
| FBZ14 | 14 | 1 x 4 1/2 | 12 | 2 | 40 |
| FBZ16 | 16 | 1 x 4 1/2 | 16 | 2 | 52 |
| FBZ18 | 18 | 1 1/8 x 5 | 16 | 1 | 37 |
| FBZ20 | 20 | 1 1/8 x 5 | 20 | 1 | 44 |
| FBZ24 | 24 | 1 1/4 x 5 1/2 | 20 | 1 | 70 |
| FBZ30 | 30 | 1 1/4 x 6 1/2 | 28 | 1 | 112 |
| FBZ36 | 36 | 1 1/2 x 7 | 32 | 1 | 165 |



Form No. FP0067

Note: All dimensions in inches

Fab pipe inc.



21425 147th Ave. N., Rogers, MN 55374
Tel: (763) 428-2259 • Fax: (763) 428-4978

