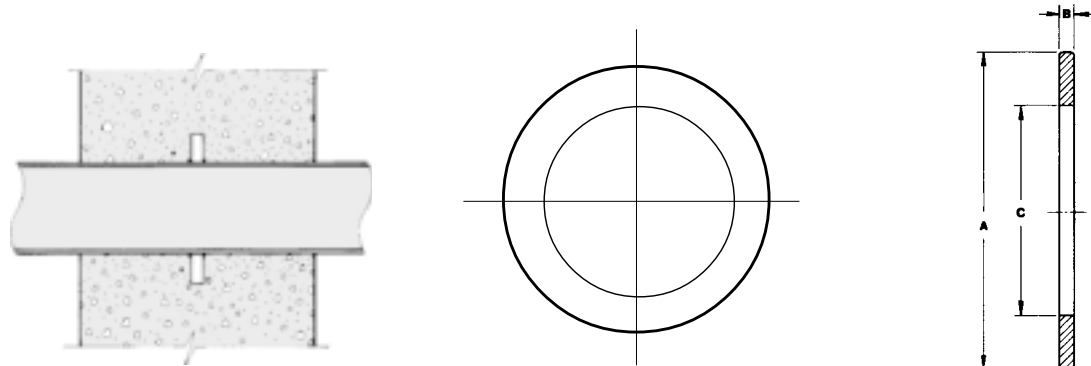




Ductile Iron Wall Collar Model CDI

UNITED BRAND



| Model CDI | | | | |
|--------------|-----------------------|------------------------|----------------------|--------|
| Nominal Size | Outside Diameter A | Overall Thickness B | Inside Diameter C | Weight |
| 3 | 6.50 | 0.50 | 4.03 | 3 |
| 4 | 8.00 | 0.50 | 4.87 | 5 |
| 6 | 10.00 | 0.50 | 6.97 | 6 |
| 8 | 12.50 | 0.50 | 9.13 | 9 |
| 10 | 14.50 | 0.50 | 11.17 | 10 |
| 12 | 16.50 | 0.50 | 13.27 | 12 |
| 14 | 18.40 | 0.50 | 15.38 | 12 |
| 16 | 21.00 | 0.50 | 17.48 | 15 |
| 18 | 23.10 | 0.50 | 19.59 | 17 |
| 20 | 25.70 | 0.50 | 21.69 | 21 |
| 24 | 30.00 | 0.50 | 25.90 | 25 |
| 30 | 37.00 | 0.625 | 32.10 | 47 |
| 36 | 43.40 | 0.625 | 38.40 | 57 |
| 42 | 49.50 | 0.750 | 44.50 | 78 |
| 48 | 55.90 | 0.750 | 50.90 | 89 |

Wall Collars are specially designed to save time when ordering special wall piping units. Simply slide the collar over end of pipe to desired position and weld.

Once the wall pipe is cemented into place, the collar acts as a water stop to prevent seepage.

1. Manufactured from ductile iron ASTM A536.
2. For use with AWWA ductile iron pipe.
3. Dimensions in accordance with AWWA C115 (Appendix C).

Dimensions in inches
Weights in lbs.

Form No. FP0036

Fab pipe inc.

21425 147th Ave. N., Rogers, MN 55374
Tel: (763) 428-2259 • Fax: (763) 428-4978



011