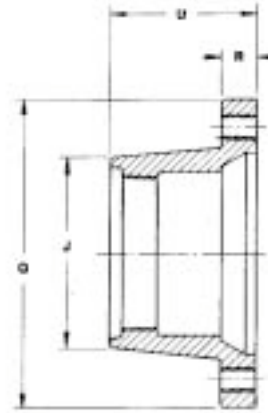
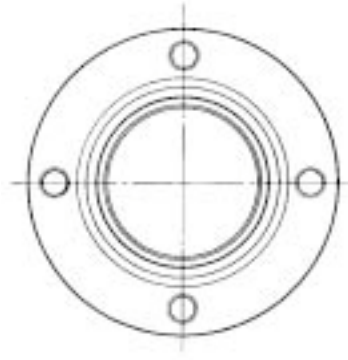
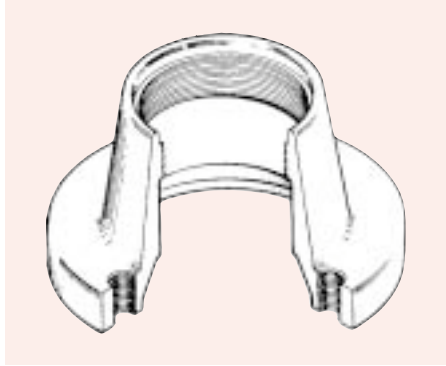




Ductile Iron Adapter Bell Model MJT

UNITED BRAND

ANSIA21.10



Nom. Pipe Size	Rough O.D. of Pipe	Flange Thk. R	Overall Thk. U	Length of Thread	O.D. of Flange Q	Hub Dia. J	Weight	Bolt Circle	Bolt Hole Threads (Unc 3 Tap)	Stud Bolt Dia. & Length	No. of Bolt Holes
3	3.96	0.94	4.12	0.94	7.69	4.50	11	6.19	5/8-11	5/8 x 3	4
4	4.80	1.00	4.25	1.00	9.12	5.32	16	7.50	3/4-10	3/4 x 3 1/2	4
6	6.90	1.06	4.43	1.15	11.12	7.56	23	9.50	3/4-10	3/4 x 3 1/2	6
8	9.05	1.12	4.75	1.38	13.37	9.73	31	11.75	3/4-10	3/4 x 3 1/2	6
10	11.10	1.19	4.87	1.50	15.69	12.06	41	14.00	3/4-10	3/4 x 3 1/2	8
12	13.20	1.25	5.12	1.75	17.94	14.16	55	16.25	3/4-10	3/4 x 3 1/2	8
14	15.30	1.31	6.50	1.87	20.31	16.25	85	18.75	3/4-10	3/4 x 4	10
16	17.40	1.38	6.75	2.06	22.56	18.43	105	21.00	3/4-10	3/4 x 4	12
18	19.50	1.44	7.00	2.25	24.83	20.53	125	23.25	3/4-10	3/4 x 4	12
20	21.60	1.50	7.24	2.43	27.08	22.63	150	25.50	3/4-10	3/4 x 4	14
24	25.80	1.62	7.50	2.75	31.58	26.82	235	30.00	3/4-10	3/4 x 4	16
30	32.00	1.81	9.13	3.38	39.12	33.00	375	36.88	1-8	1 x 5	20
36	38.30	2.00	9.75	4.00	46.00	39.25	500	43.75	1-8	1 x 5	24
42	44.50	2.00	10.25	4.50	53.12	45.31	640	50.62	1 1/4-7	1 1/4 x 6	28
48	50.80	2.00	10.25	5.12	60.00	51.75	810	57.50	1 1/4-7	1 1/4 x 6	32

1. Flanges are fully machined, drilled and faced in accordance with ANSI A21.10 (AWWA C110), where applicable.
2. Bells are threaded in accordance with ANSI B1.20.1 for use on AWWA ductile iron pipe
3. Manufactured from ductile iron ASTM A536
4. MJ bell dimensions in accordance with ANSI A21.10 (AWWA C110)

Dimensions in inches
Weights in lbs.

Form No. FP0035

Fab pipe inc.

011



21425 147th Ave. N., Rogers, MN 55374
Tel: (763) 428-2259 • Fax: (763) 428-4978

