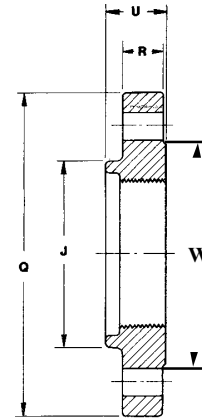
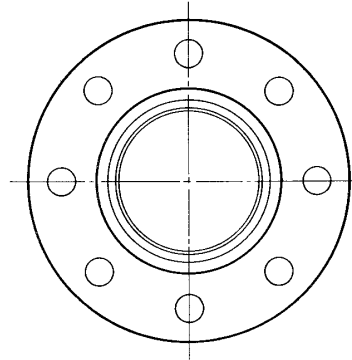
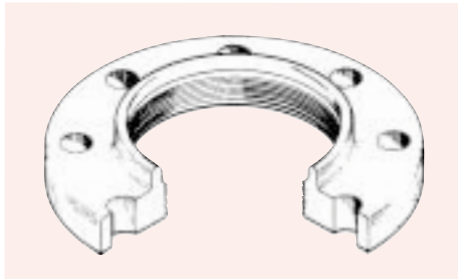




Ductile Iron Extra Heavy Threaded Flange Model FDX - 250 lb. Drilling

UNITED BRAND

ANSI B16.1 Class 250



Nom. Pipe Size	Rough O.D. of Pipe	Flange Thk. R	Overall Thk. U	Length of Thread	O.D. of Flange Q	Hub Dia. J	W	Weight	Bolt Circle	Bolt Hole Dia.	Bolt Dia & Length	No. of Bolt Holes
3	3.96	1.06	1.56	1.19	8.25	4.62	5.69	12	6.62	7/8	3/4 x 3 1/2	8
4	4.80	1.19	1.69	1.31	10.00	5.75	6.94	20	7.88	7/8	3/4 x 3 3/4	8
6	6.90	1.38	1.94	1.56	12.50	8.12	9.69	32	10.62	7/8	3/4 x 4	12
8	9.05	1.56	2.18	1.75	15.00	10.25	11.94	51	13.00	1	7/8 x 4 1/2	12
10	11.10	1.87	2.44	1.94	17.50	12.62	14.06	77	15.25	1 1/8	1 x 5 1/4	16
12	13.20	1.93	2.56	2.18	20.50	14.75	16.44	125	17.75	1 1/4	1 1/8 x 5 1/2	16
14	15.30	2.12	2.68	2.25	23.00	16.25	18.94	160	20.25	1 1/4	1 1/8 x 6	20
16	17.40	2.19	2.87	2.50	25.50	18.44	21.06	230	22.50	1 3/8	1 1/4 x 6 1/4	20
18	19.50	2.31	3.00	2.56	28.00	20.53	23.31	260	24.75	1 3/8	1 1/4 x 6 1/2	24
20	21.60	2.44	3.31	2.87	30.50	22.63	25.56	270	27.00	1 3/8	1 1/4 x 6 3/4	24
24	25.80	2.75	3.75	3.25	36.00	26.80	30.31	310	32.00	1 5/8	1 1/2 x 7 1/2	24
30	32.10	3.00	4.75	4.33	43.00	35.00	37.19	516	39.25	2	1 3/4 x 8 1/2	28
36	38.30	3.38	5.37	4.63	50.00	41.25	43.69	637	46.00	2 1/4	2 x 9 1/2	32
42	44.50	3.69	6.00	5.19	57.00	48.50	50.44	1347	52.75	2 1/4	2 x 10	36
48	50.80	4.00	6.63	5.82	65.00	56.55	58.44	2083	60.75	2 1/4	2 x 10 3/4	40

1. Flanges are fully machined, drilled and faced in accordance with ANSI B16.1 - Class 250, RAISED FACE.
2. Flanges are threaded in accordance with ANSI B1.20.1
3. For use with AWWA ductile iron pipe, fabricated in accordance with AWWA C115 (ANSI A21.15).
4. Manufactured from ductile iron ASTM A536.

Dimensions in inches
Weights in lbs.

Form No. FP0033

Fab pipe inc.

011



21425 147th Ave. N., Rogers, MN 55374
Tel: (763) 428-2259 • Fax: (763) 428-4978

