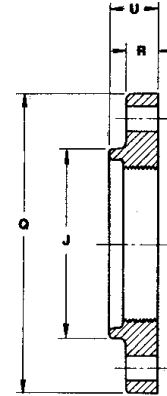
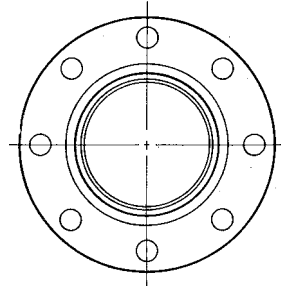
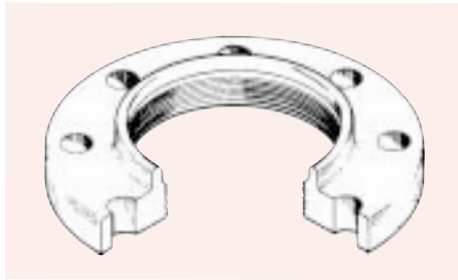




Solid Ductile Iron Threaded Flange Model FDI

UNITED BRAND

ANSI B16.1 Class 125



Nom. Pipe Size	Rough O.D. of Pipe	Flange Thk. R	Overall Thk. U	Length of Thread	O.D. of Flange Q	Hub Dia J	Weight	Bolt Circle	Bolt Hole Dia.	Bolt Dia. & Length	No. of Bolt Holes
3	3.96	0.75	1.25	0.94	7.50	4.50	8	6.00	3/4	5/8 x 2 1/2	4
4	4.80	0.94	1.37	1.00	9.00	5.32	14	7.50	3/4	5/8 x 3	8
6	6.90	1.00	1.56	1.16	11.00	7.56	19	9.50	7/8	3/4 x 3 1/2	8
8	9.05	1.12	1.87	1.38	13.50	9.73	30	11.75	7/8	3/4 x 3 1/2	8
10	11.10	1.19	2.00	1.50	16.00	12.06	41	14.25	1	7/8 x 4	12
12	13.20	1.25	2.25	1.75	19.00	14.16	62	17.00	1	7/8 x 4	12
14	15.30	1.38	2.50	1.87	21.00	16.25	75	18.75	1 1/8	1 x 4 1/2	12
16	17.40	1.44	2.75	2.06	23.50	18.44	96	21.25	1 1/8	1 x 4 1/2	16
18	19.50	1.56	3.00	2.25	25.00	20.53	100	22.75	1 1/4	1 1/8 x 5	16
20	21.60	1.69	3.25	2.44	27.50	22.63	128	25.00	1 1/4	1 1/8 x 5	20
24	25.80	1.88	3.50	2.75	32.00	26.82	175	29.50	1 3/8	1 1/4 x 5 1/2	20
30	32.00	2.12	3.37	3.37	38.75	32.75	250	36.00	1 3/8	1 1/4 x 6 1/2	28
36	38.30	2.38	4.00	4.00	46.00	39.12	375	42.75	1 5/8	1 1/2 x 7	32
42	44.50	2.62	4.50	4.50	53.00	45.31	532	49.50	1 5/8	1 1/2 x 7 1/2	36
48	50.80	2.75	5.12	5.12	59.50	51.75	663	56.00	1 5/8	1 1/2 x 8	44
54	57.56	3.00	7.17	6.42	66.25	58.64	822	62.75	2	1 3/4 x 8 1/2	44
60	61.61	3.12	7.50	6.75	73.00	62.69	1184	69.25	2	1 3/4 x 9	52
64	65.67	3.38	8.00	7.25	80.00	66.75	1686	76.00	2	1 3/4 x 9	52

1. Flanges are fully machined, drilled and faced in accordance with ANSI B16.1 Class 125.
2. Flanges are threaded in accordance with ANSI B1.20.1
3. Manufactured from ductile iron ASTM A536
4. For use with AWWA ductile iron pipe, fabricated in accordance with AWWA C115 (ANSI A21.15).
5. Dimensions are in strict accordance with AWWA C115, Table 2.

Dimensions in inches
Weights in lbs.

Form No. FP0031

Fab pipe inc.



21425 147th Ave. N., Rogers, MN 55374
Tel: (763) 428-2259 • Fax: (763) 428-4978

